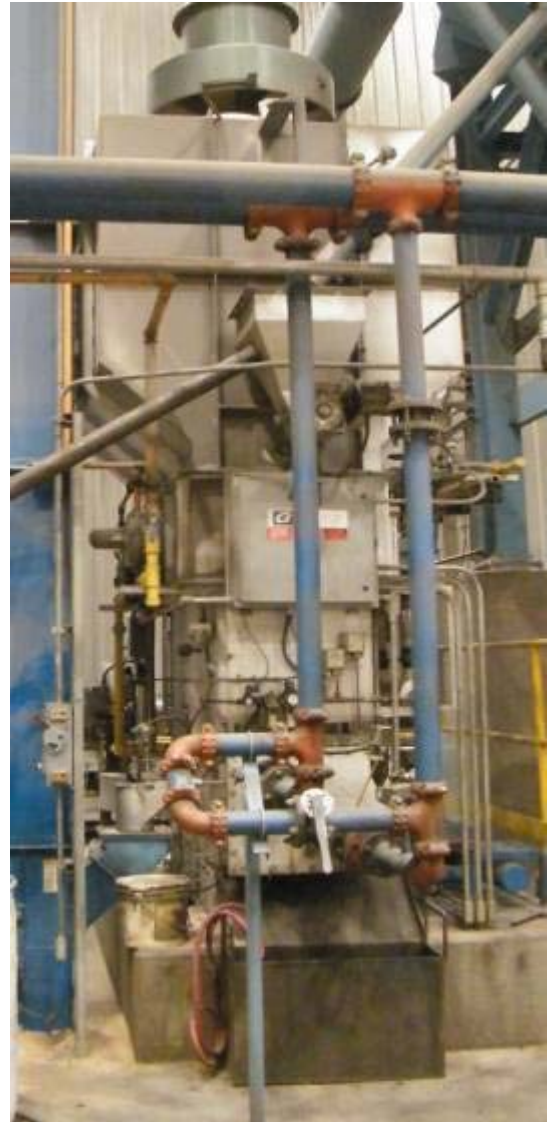


November 22, 2010

USED THERMIFIRE TF-3000 and DUST COLLECTOR



transfer box end



sand discharge end

The thermal reclaimer and dust collector will be sold “as is”.

This is a 1.5 ton per hour machine and can produce 36 tons of sand in 24 hours...it can produce 180 tons of thermal sand over a 5 days run and 252 tons over 7 days. (1 ton = 2000lbs)

- unit is now removed and stored in a building ...was started up in January 2007
- unit is set up for 55 AFS Grain sized sand
- set up for natural gas but could be converted to propane
- unit comes with fluidizing, combustion fans, the main control panel is a limited version and would need about \$26 K to complete, overhead dilution damper as per photo and dust collector with exhaust fan. - to complete a system a foundry will need a lump reducer, sand transporters, silos and a water cooling tower with pump. (this equipment is all available from us if you need help).



above pic shows motorized louvered assembly on dust collector fan.

Also included in the price.....one dust collector removed from production, as is, bought for the thermal system.

The baghouse is a MAC, MCF Cylindrical Model 144MCF153 Style III. 16,000 cfm (oversized for the Thermal reclaimer).

- includes the fan and motor on the right hand side but not the left unit.
- It does not include the stack.
- It is a reverse pulse jet type not needing compressed air as it has it's own fan to generate the cleaning air.

Units are now **deinstalled** ready for shipping.