

NOTE:
SHAFTS MAY BE REMOVED FROM EITHER SIDE OF BARREL PREFERABLY THE RIGHT SIDE

7" DIA PIPE
935 CFM (EACH)
BLAST GATE FOR EACH
7" DIA PIPE (BY PANGBORN)

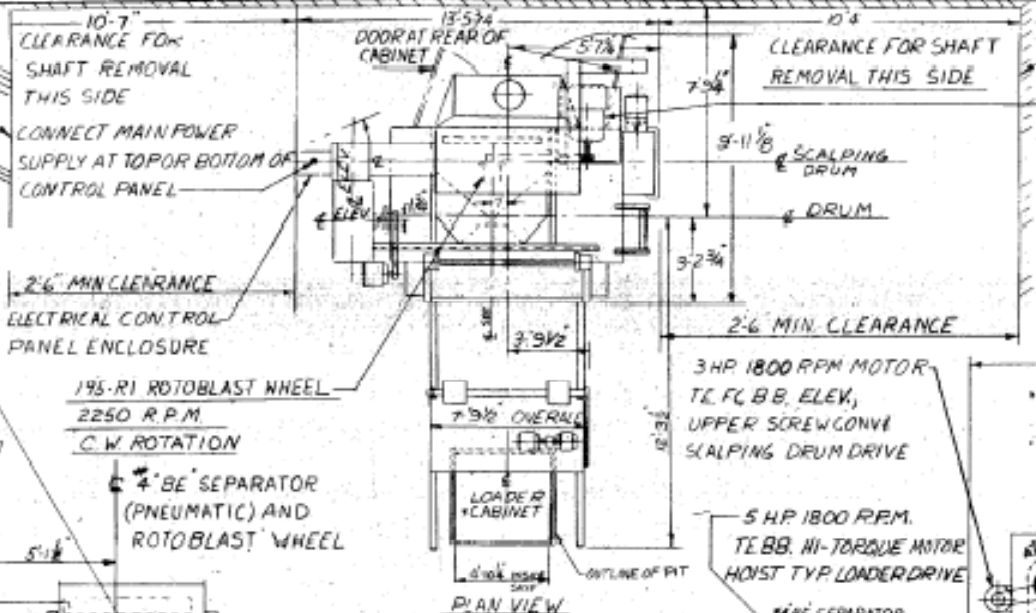
41F ELEVATOR

PUSH BUTTON PANEL

1/2 HP 1200 RPM
TE B-B (HOIST TYPE) MOTOR
LOAD DOOR DRIVE
ELECTRICAL CONTROL
PANEL ENCLOSURE

ELEV
BOOT
PULLY

FRONT ELEVATION
(LOADER NOT SHOWN)



PLAN VIEW

AIR OPERATED
ABRASIVE GATE
COMPRESSED AIR LINE REQUIRED

LADDER MAY BE REMOVED FROM
SIDE OF BARREL AND ATTACHED
TO LOAD DOOR FOR USE IN
SERVICING ROTOBLAST WHEEL

WORK CONVEYOR
MANG OVERLAY SLATS

FLOORLINE INSIDE
BOTTOM OF SKIP

NOTE:
THIS SKIP OF THIS LOADER WILL HANDLE A TOTE BOX UP TO AND INCLUDING 4'-4" LG X 3'-4" WIDE X 5'0" HIGH THESE DIMENSIONS ARE OUTSIDE DIMENSIONS AND INCLUDE THE LEGS AND ANY LEGS OR CLIPS, ETC. AND ARE TO BE USED AS A GUIDE ONLY. THE TOTE BOX IS TO BE CONSTRUCTED TO HOLD APPROX. 200 LB. FT. KEEPING IN MIND THE MAXIMUM DIMENSIONS FOR LENGTH, WIDTH AND HEIGHT THE TOTE BOX MUST HAVE AN OPENING OR OPENINGS IN THE LONG SIDE TO BE USED BY A FORK LIFT TRUCK. THE TOTE BOX CAN BE PICKED UP BY THE TRUCK AND DEPOSITED IN THE SKIP WITH THE LONG SIDE FACING THE FRONT OF THE LOADER. CUSTOMER WILL HAVE TO ALTER THE INSIDE OF THE SKIP TO SUIT HIS TOTE BOX. MAXIMUM WEIGHT OF TOTE BOX APPROX. 450 LBS.

3 HP 1800 RPM MOTOR
TE, FC, BB, ELEV,
UPPER SCREW CONVEYOR
SCALPING DRUM DRIVE

5 HP 1800 RPM
TE, BB, HI-TORQUE MOTOR
HOIST TYP. LOADER DRIVE

POWER OPERATED
LOAD DOOR

3'6" CLEARANCE
OVER SLATS

5'-5 1/2" 5'-2 1/2" 5'-2 1/2"

RH SIDE ELEVATION

FOR ANCHOR BOLT PLAN SEE H-682462
FILM OF M-670163 50 301-8337

WALL OR OTHER INTERFERENCE

50 HP 1800 R.P.M. TE, FC, BB MOTOR
ROTOBLAST DRIVE (WITH SLIDE BASE)

WALL OR OTHER INTERFERENCE

SCALPING DRUM
SEPARATOR

VISIBLE OVER FLOW
SPOUT

1 1/2" DIA CONNECTION
TRANSFORM TO 1 1/2" DIA.

12'200 CFM FOR AVER.
SAND COND.
COARSE REFUSE

3 HP 1800 RPM MOTOR
TE, FC, BB WORK
CONVEYOR DRIVE
FINE REFUSE

2 HP 1800 RPM MOTOR
TE, FC, BB, LOWER
SCREW CONVEYOR
DRIVE

FINE REFUSE
RECEPTACLE (BY CUSTOMER)

TITLE
GENERAL ARRANGEMENT
24 GN BARREL (24 FP (TOTE BOX) LOADER)

SCALE: 3/4" = 1'-0" DO NOT SCALE DRAWING



DWG. NO. M-682999

APP.				
CHK.				
DRAWN				
DATE				
REV.				

LAYOUT	DRAWN	CHK.	APP.	D/TE	MACHINING TOLERANCES UNLESS OTHERWISE SPECIFIED
✓	T.H. 12-16-68	E.L.H. 12-19	C.P.C.	12-19 1968	FRACTIONAL SIZE ± 1/64" DECIMAL SIZE ± .006