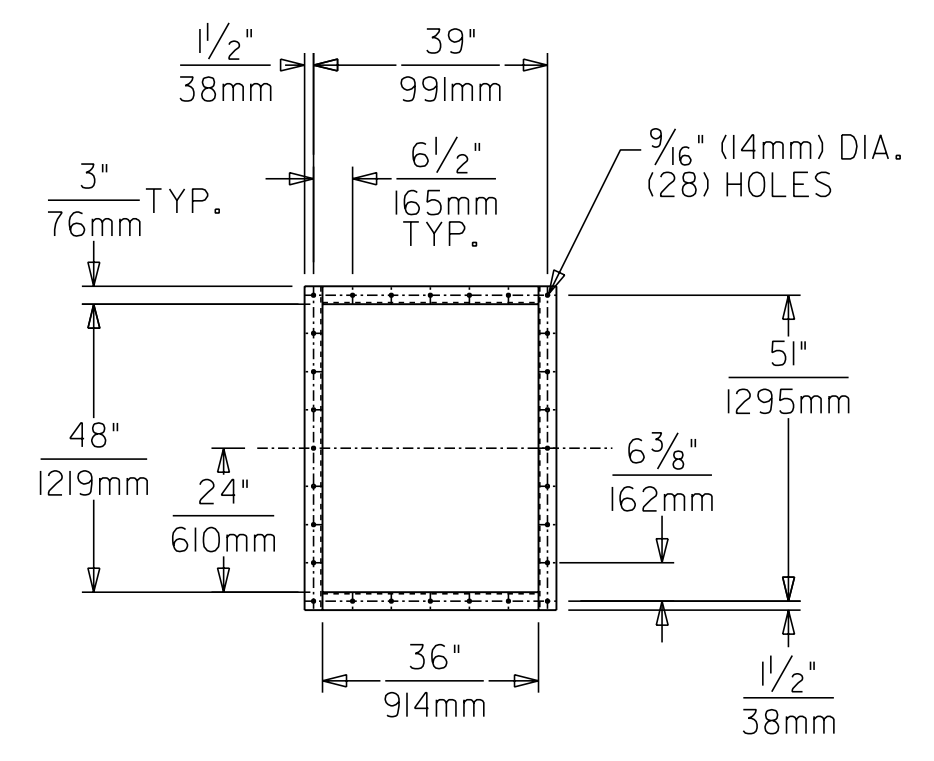
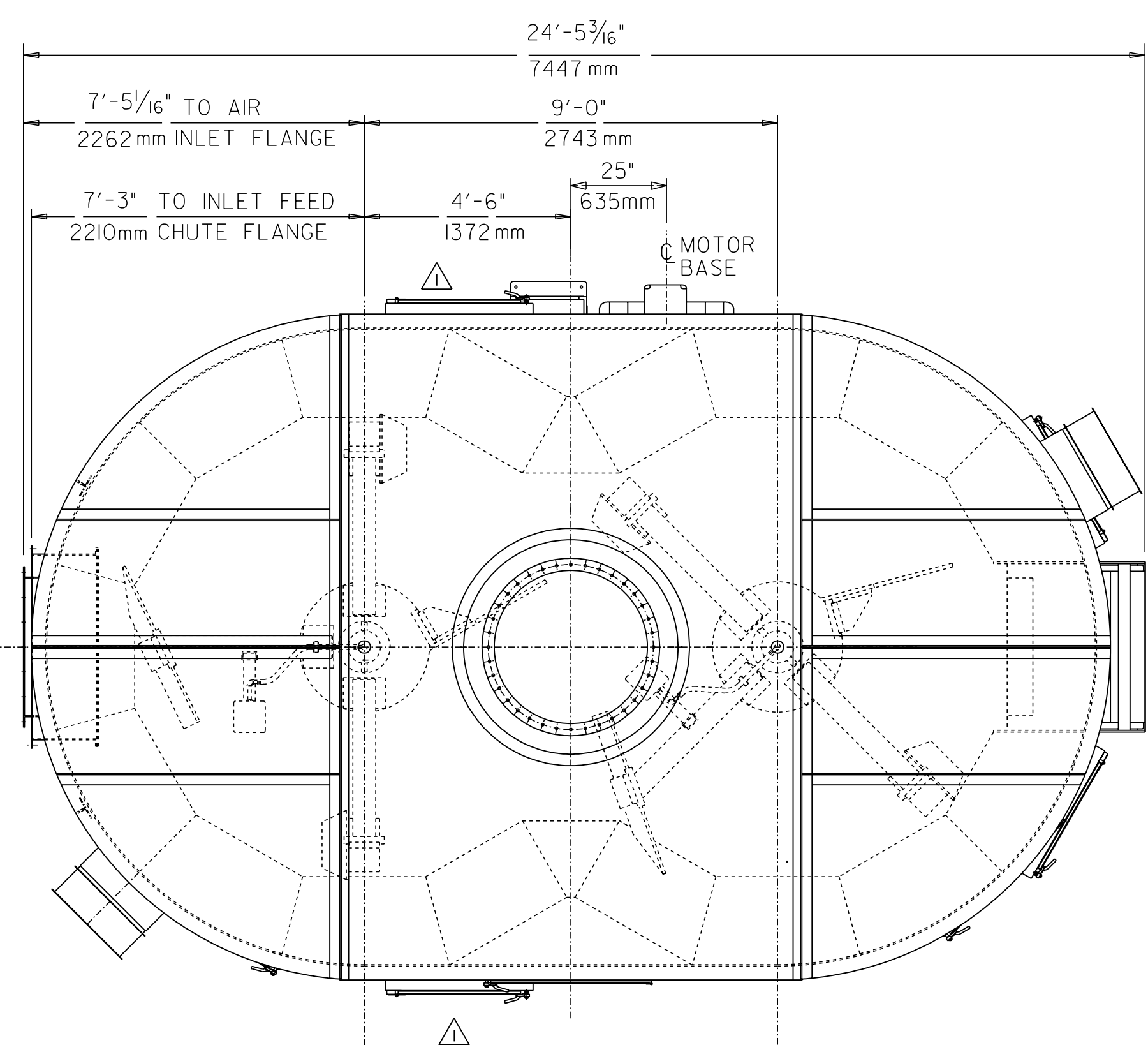
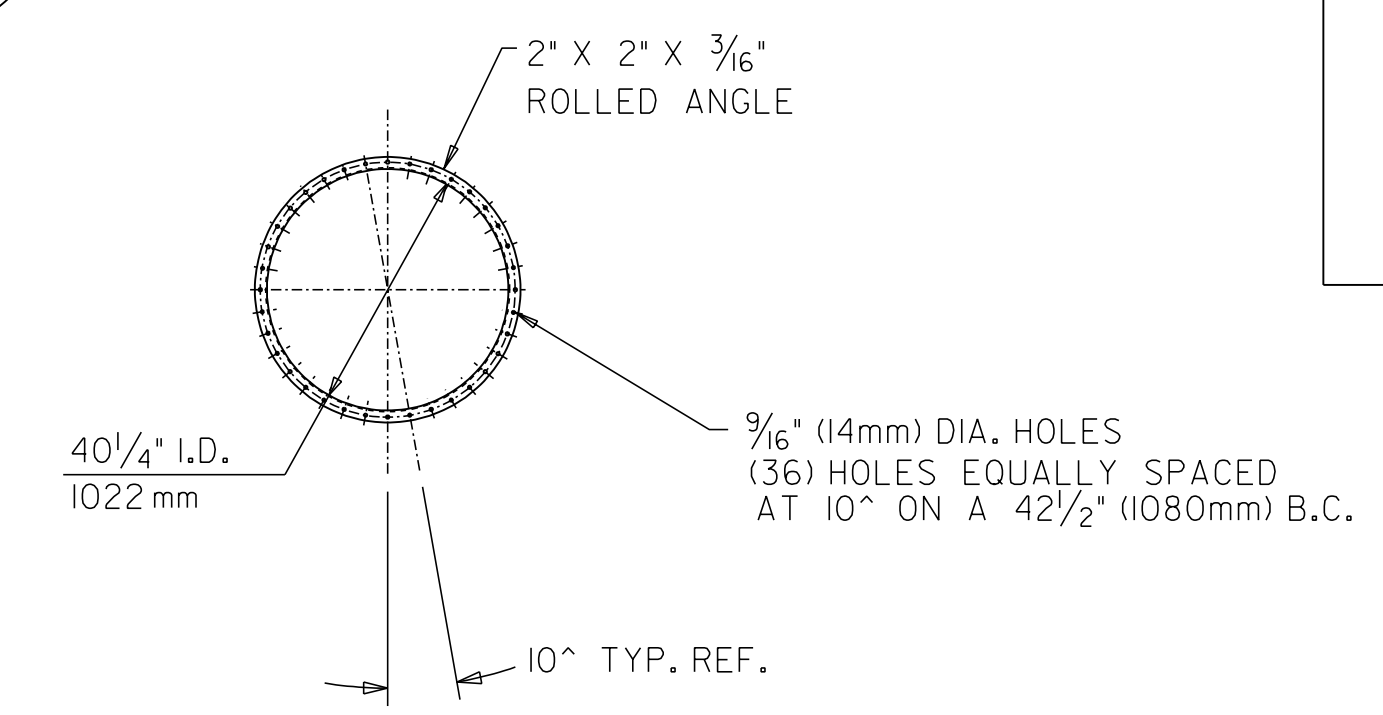


SECTION "A-A"



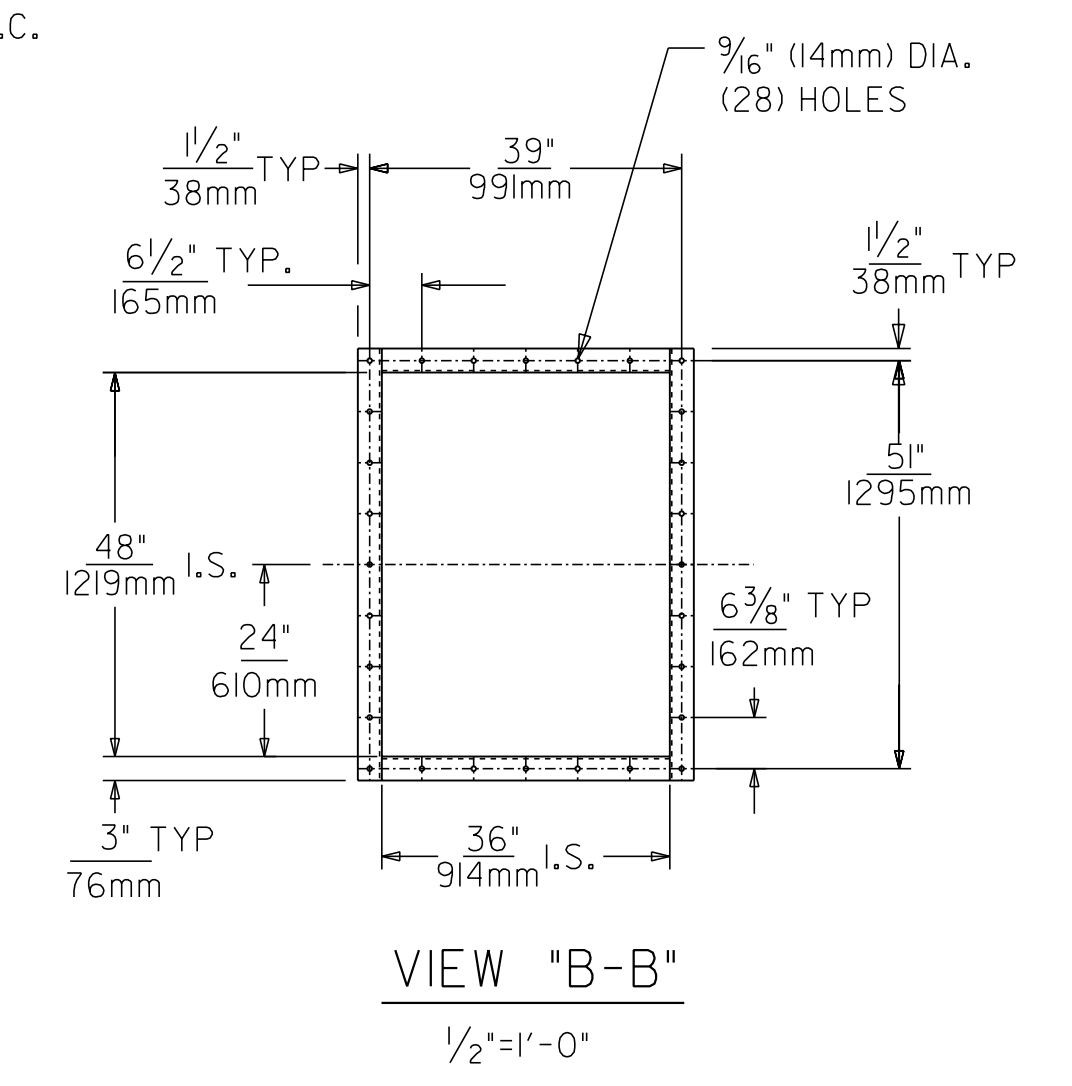
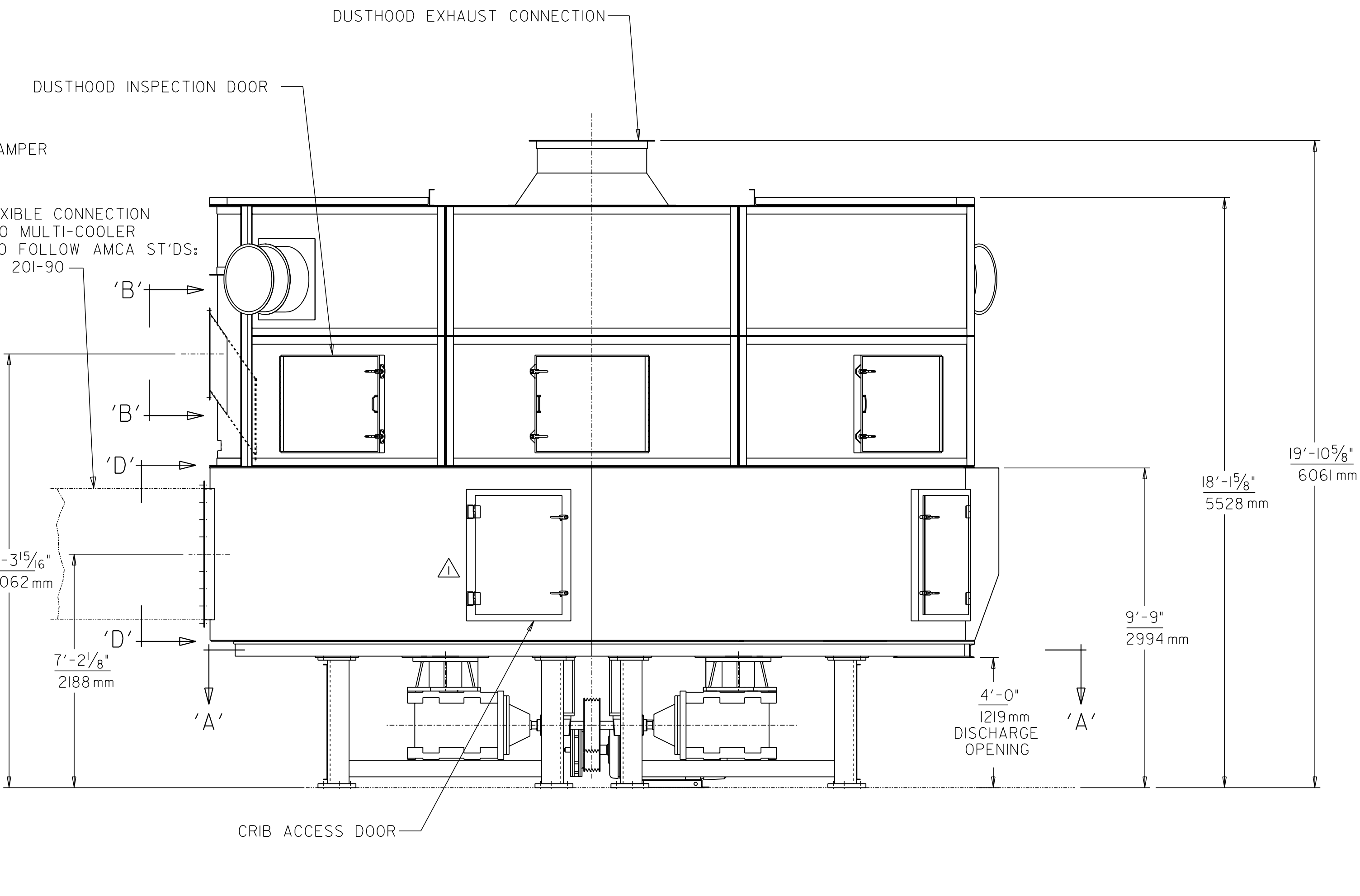
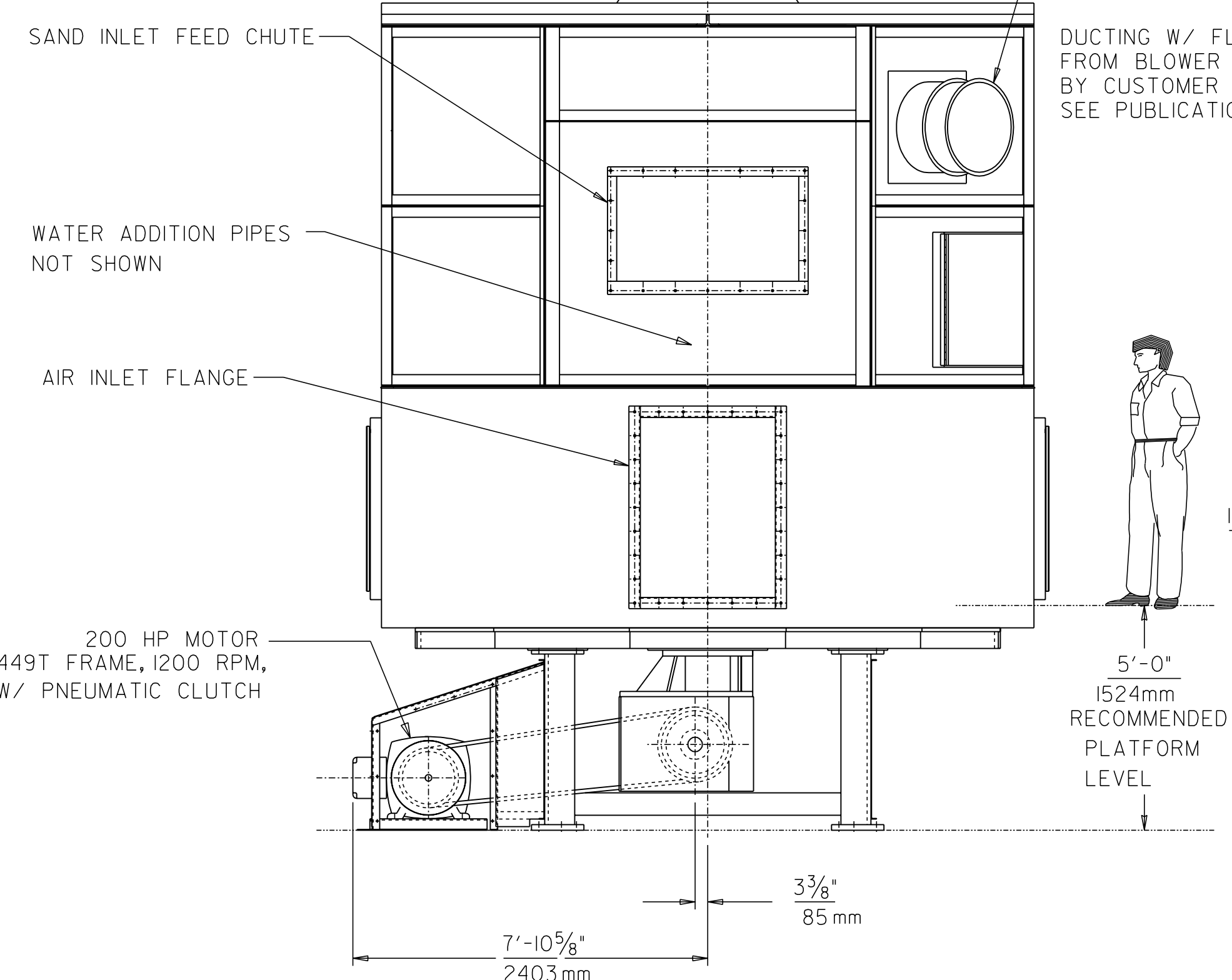
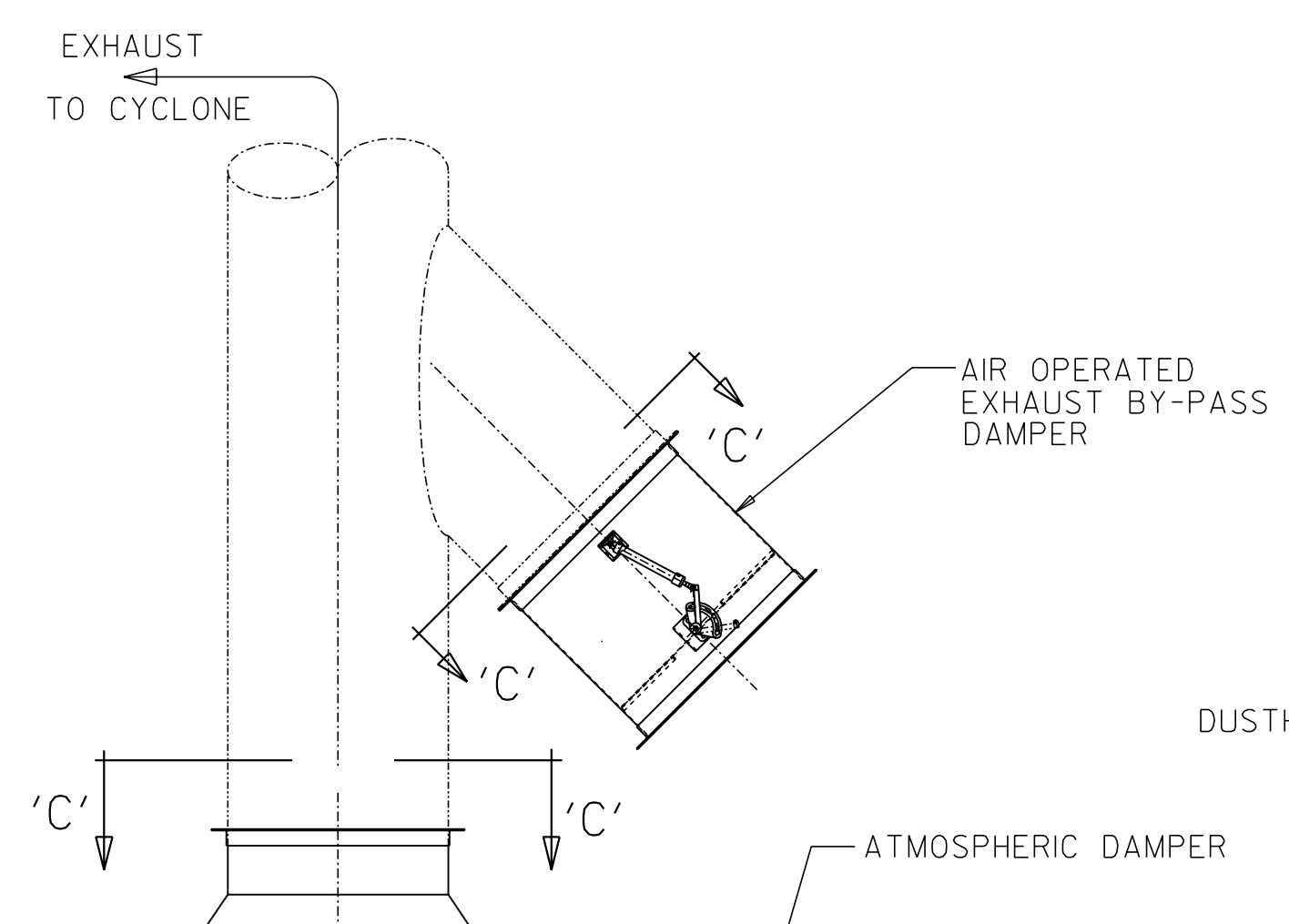
VIEW "D-D"



VIEW "C-C"

TECHNICAL DATA

GROSS OPERATING WEIGHT:	85000 LBS. 38555 kg
LOAD PER PEDESTAL:	
STATIC: 8 @	10200 LBS. EACH 4625 kg
DYNAMIC: 8 @	20400 LBS. EACH 9550 kg
MOTOR WEIGHT WITH CLUTCH:	3700 LBS. 1679 kg
AIR INLET BLOWER CAPACITY:	26400 S.C.F.M. @ 16" W.G. 44850 M ³ /HR @ 406mm W.G.
EXHAUST REQUIREMENTS : (AT DUSTHOOD CONNECTION)	32800 S.C.F.M. @ 1" W.G. 55730 M ³ /HR @ 25mm W.G.
COMPRESSED AIR REQUIREMENT: (CLEAN & DRY)	80 P.S.I. 5.5 BAR
WATER SUPPLY REQUIRED:	
MAX. TEMPERATURE:	60 DEG. F 15 DEG. C
MIN. PRESSURE:	40 P.S.I. 2.8 BAR
MAX. FLOW:	50 GAL./MIN. 190 L/MIN.



VIEW "B-B"

REFERENCES (SEE FOLLOWING DRWG'S FOR TECHNICAL DATA)
 • CYCLONE & VALVE ASSEMBLY: 250-39871
 • BLOWER ARRANGEMENT: 250-44353

2	10-16-99	UPDATED TO STANDARD	0278
1	04-01-96	(2) CRIB ACCESS DOORS RELOCATED TO THE CHARGE HALF	RG
REV.	DATE	DESCRIPTION OF REVISION	ECN

THIS DOCUMENT IS THE PROPERTY OF SIMPSON TECHNOLOGIES CORPORATION AND CONTAINS PROPRIETARY AND CONFIDENTIAL INFORMATION OF SIMPSON TECHNOLOGIES. THIS DOCUMENT IS LOANED IN CONFIDENCE, SUBJECT TO RETURN UPON REQUEST, ON THE EXPRESS CONDITION THAT NO COPIES SHALL BE MADE AND THAT NEITHER IT NOR THE INFORMATION CONTAINED THEREIN SHALL BE DISCLOSED TO OTHERS WITHOUT THE EXPRESS WRITTEN CONSENT OF SIMPSON TECHNOLOGIES. FURTHER THAT THE INFORMATION SHALL BE USED BY THE RECIPIENT ONLY AS EXPRESSLY APPROVED BY SIMPSON TECHNOLOGIES.

SIMPSON TECHNOLOGIES
 SIMPSON TECHNOLOGIES CORP.
 751 SHORELINE DRIVE
 AURORA ILLINOIS, U.S.A.

GENERAL ARRANGEMENT & FOUNDATION		SCALE: 3/8"=1'-0"	FIRST RELEASE:	ORDER NO: EX-9509009
250 SIMPSON MULTI-COOLER		MADE BY: TWR	DATE: 2-29-96	250-44308
CHECKED BY: R.G.	APPROVED BY:			

TRADE SECRET
 INFORMATION