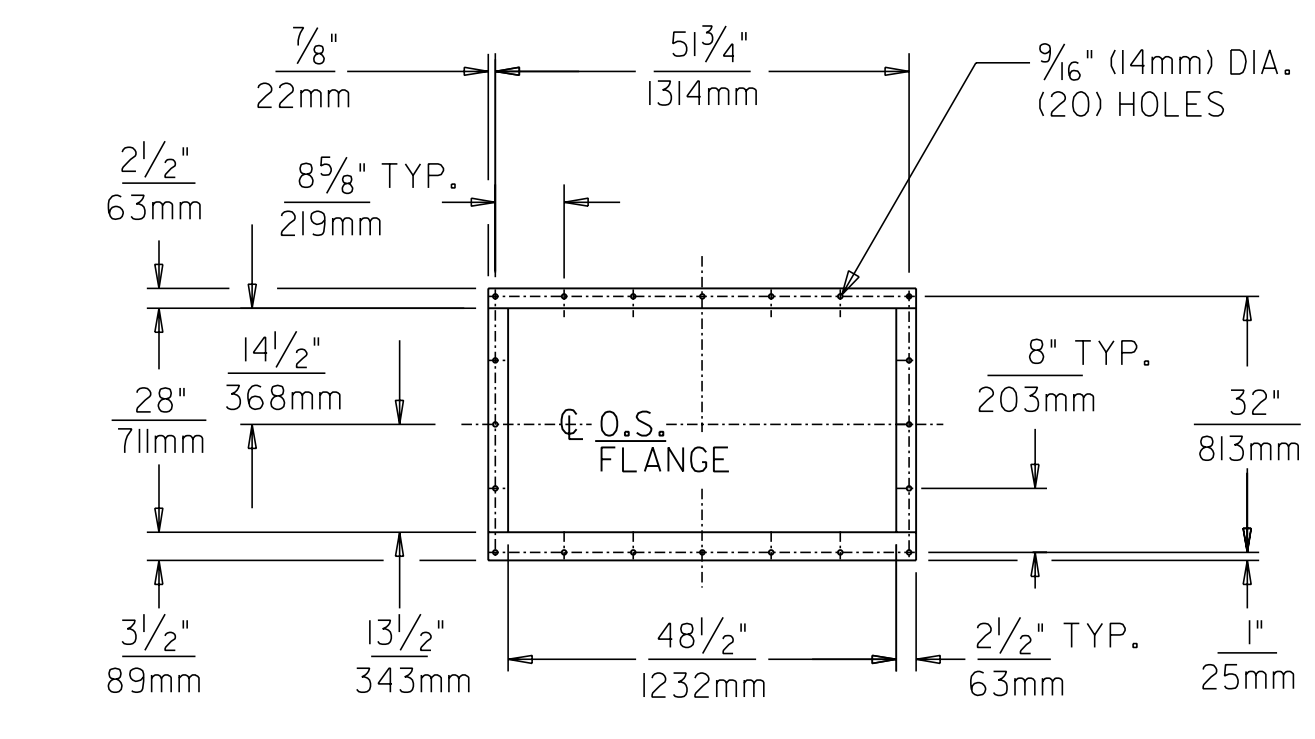
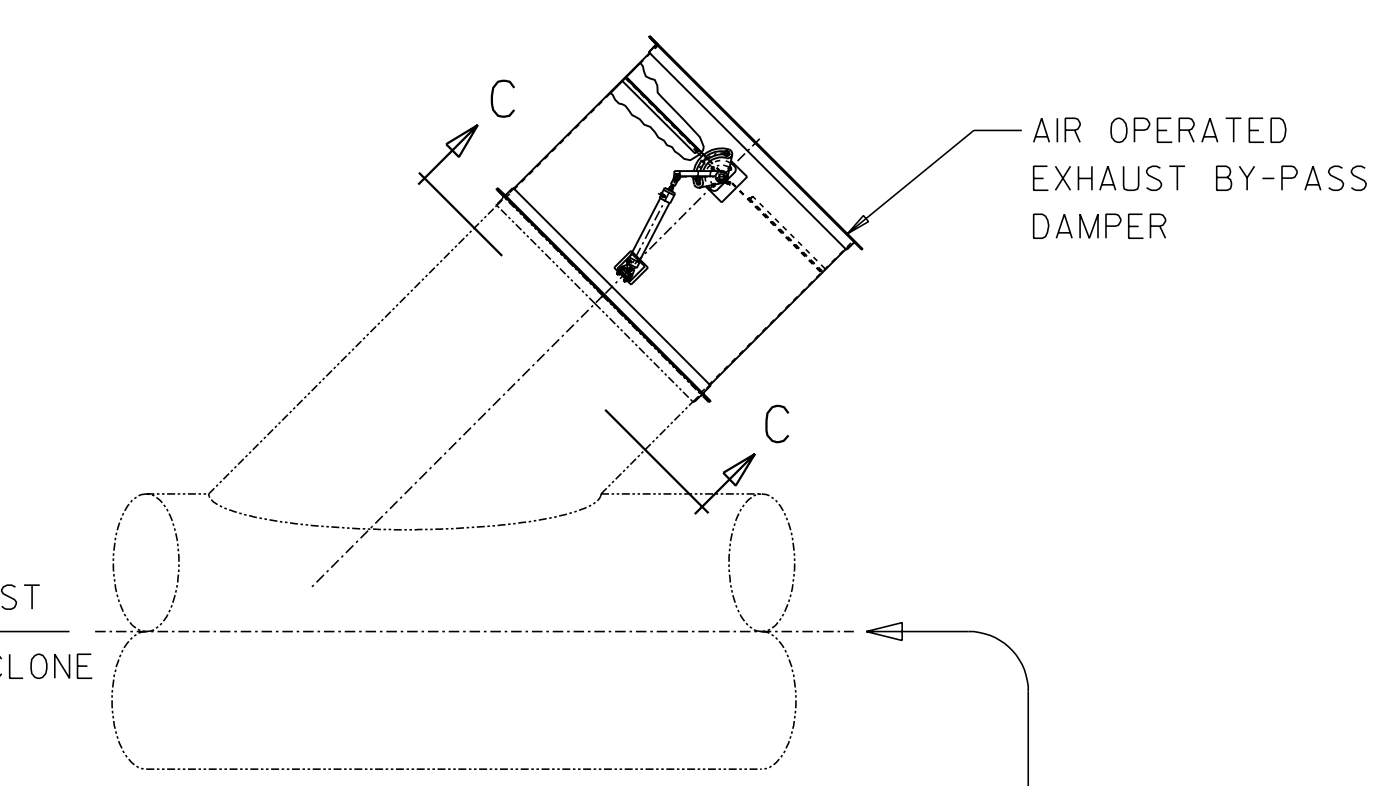
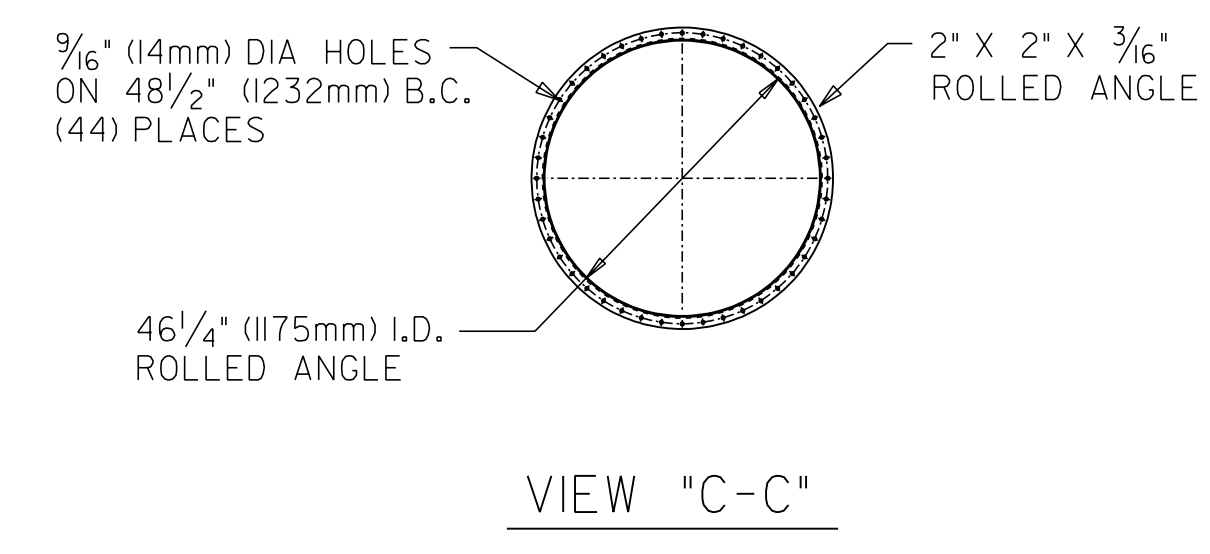
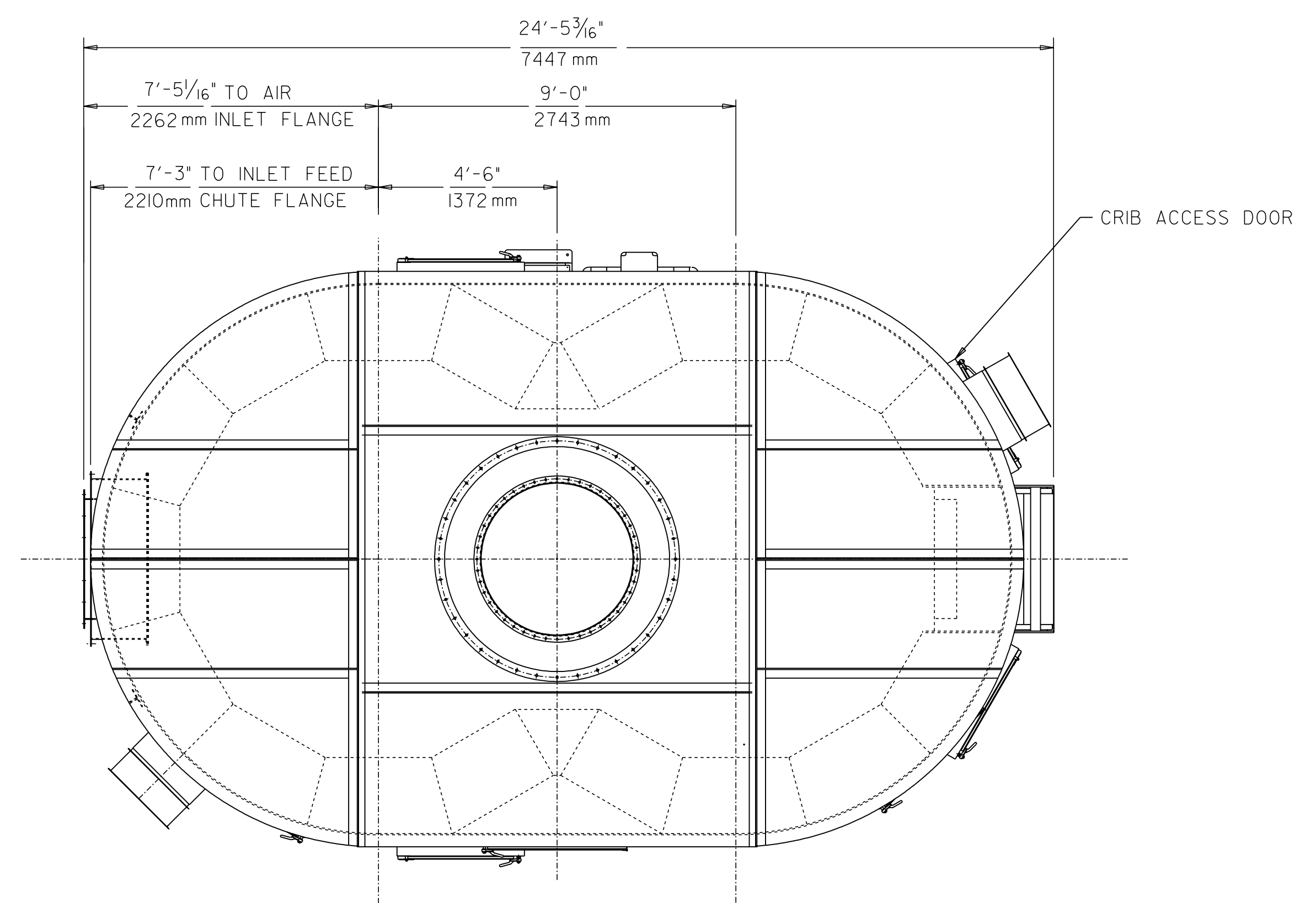
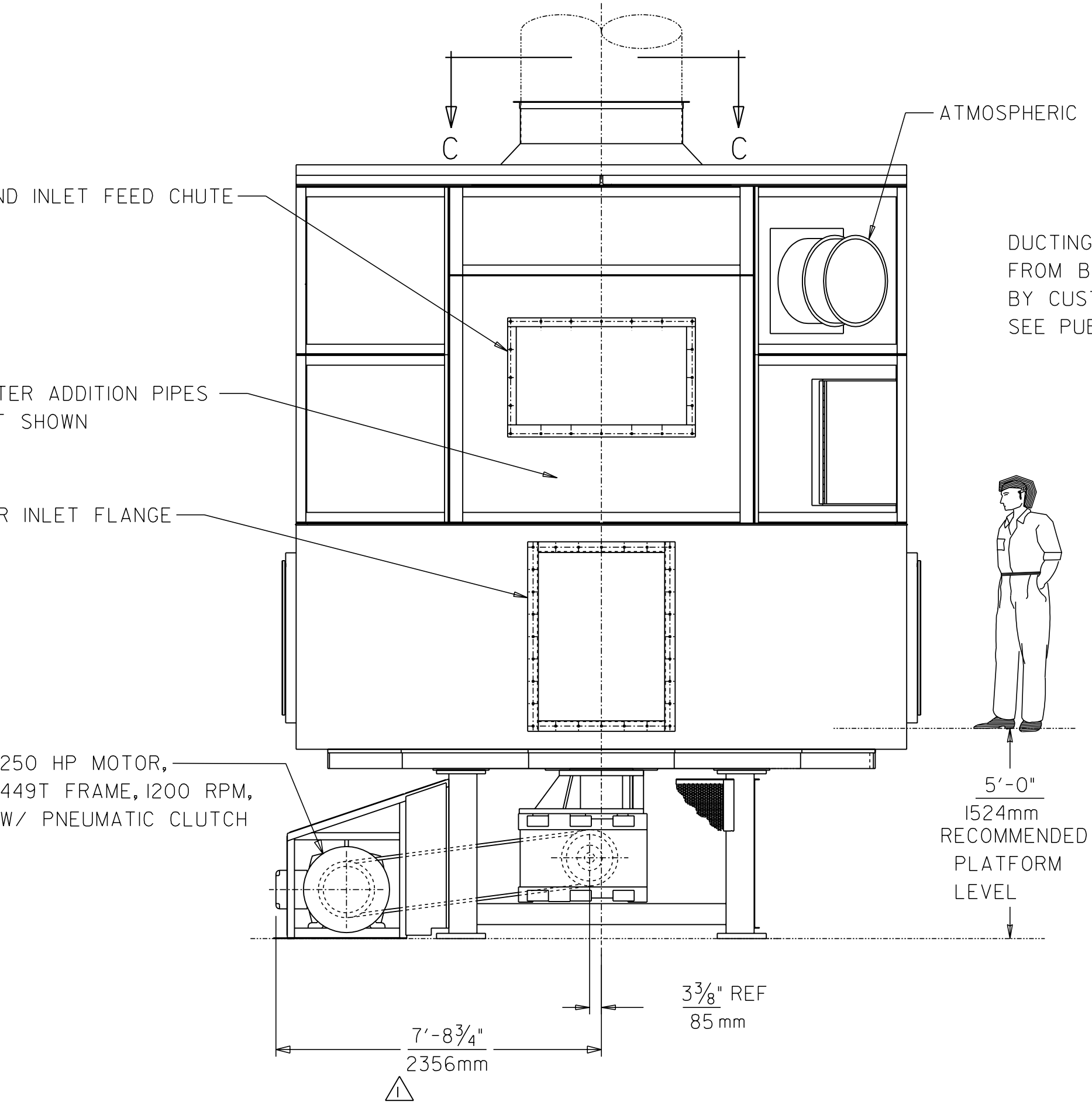


SECTION "A-A"



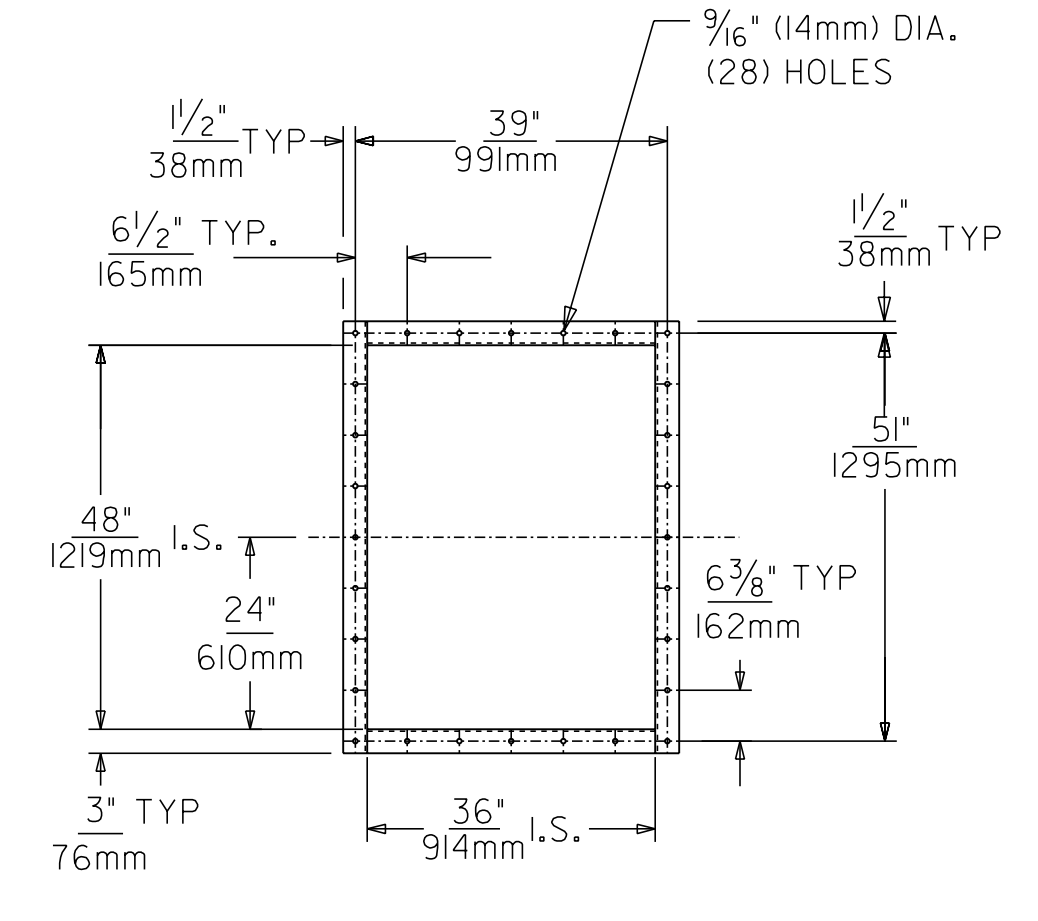
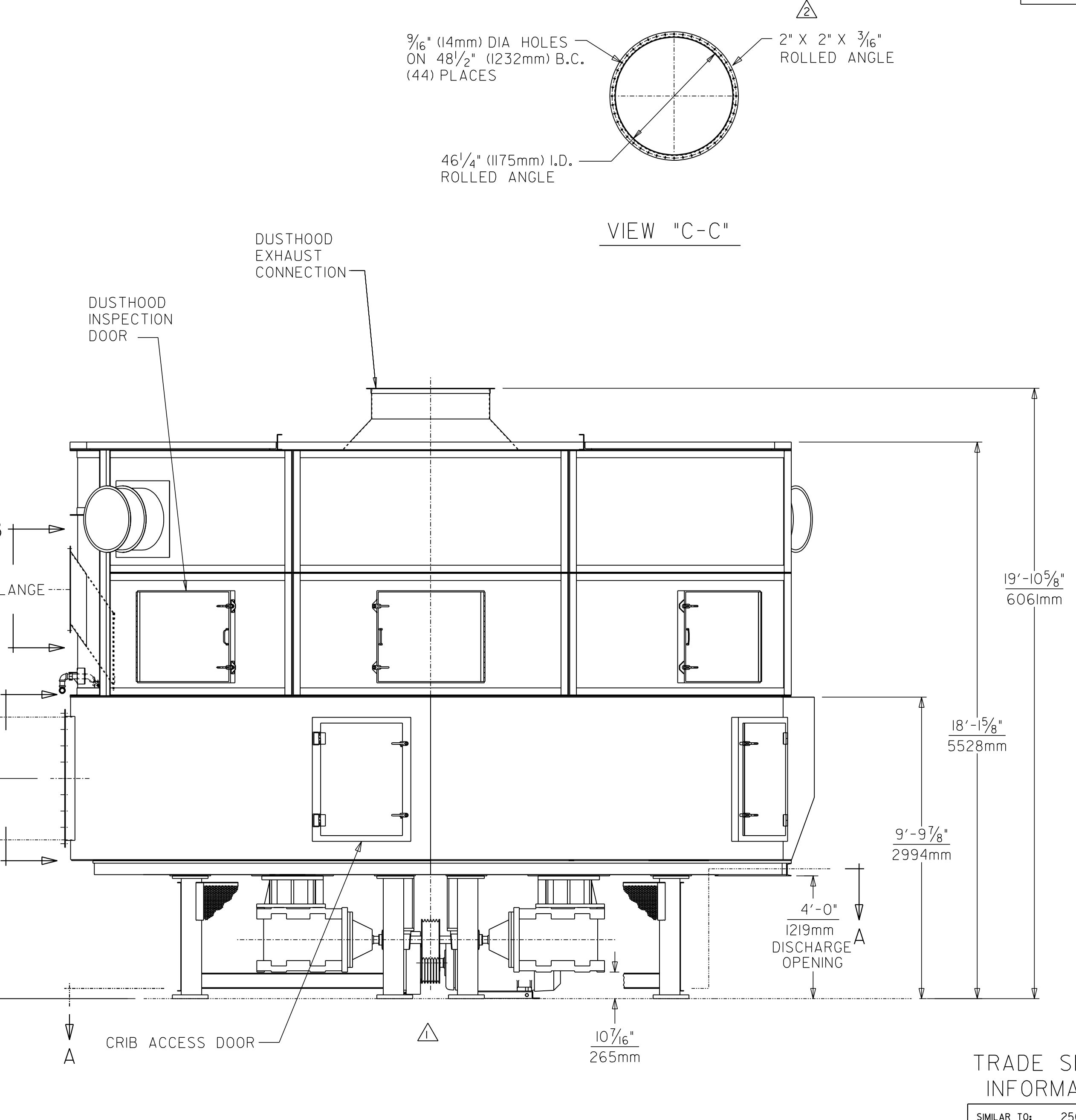
VIEW "B-B"
SCALE: 1/2"=1'-0"



VIEW "C-C"

TECHNICAL DATA

GROSS OPERATING WEIGHT:	90,000 lbs. 40,820 kg
LOAD PER PEDESTAL:	
STATIC: 8 @	11,250 lbs. EACH 5,105 kg
DYNAMIC: 8 @	22,500 lbs. EACH 10,210 kg
MOTOR WEIGHT WITH CLUTCH:	3700 lbs. 1679 kg
AIR INLET BLOWER CAPACITY:	31,700 S.C.F.M. @ 16" W.G. 53,865 M ³ /HR @ 406mm OF WATER GAUGE PRESSURE
EXHAUST REQUIREMENTS: (AT DUSTHOOD CONNECTION)	39,400 S.C.F.M. @ 1" W.G. 66,950 M ³ /HR @ 25mm OF WATER GAUGE PRESSURE
COMPRESSED AIR REQUIREMENT: (CLEAN & DRY)	80 P.S.I. 5.5 BAR
WATER SUPPLY REQUIRED:	
MAX. TEMPERATURE:	60 DEG. F 15 DEG. C
MIN. PRESSURE:	40 P.S.I. 2.8 BAR
MAX. FLOW:	60 GAL./MIN. 230 L/MIN.



VIEW "D-D"
SCALE: 1/2"=1'-0"

- REFERENCES (SEE FOLLOWING DRWG'S FOR TECH'L DATA)
- CYCLONE & VALVE ASSEMBLY: 300-40241
 - BLOWER ARRANGEMENT: 300-40242

REV.	DATE	DESCRIPTION OF REVISION	ECN
2	5-10-01	2"x2"x3/16" WAS 3"x3"x1/4"	0364
1	8-10-99	UPDATED GRFX & FD'N DIM'S PER NEW DRIVE DS'G	0278

THIS DOCUMENT IS THE PROPERTY OF SIMPSON TECHNOLOGIES CORPORATION AND CONTAINS PROPRIETARY AND CONFIDENTIAL INFORMATION OF SIMPSON TECHNOLOGIES. THIS DOCUMENT IS LOANED IN CONFIDENCE, SUBJECT TO RETURN UPON REQUEST, ON THE EXPRESS CONDITION THAT NO COPIES SHALL BE MADE AND THAT NEITHER IT NOR THE INFORMATION CONTAINED THEREIN SHALL BE DISCLOSED TO OTHERS WITHOUT THE EXPRESS WRITTEN CONSENT OF SIMPSON TECHNOLOGIES. FURTHER THAT THE INFORMATION SHALL BE USED BY THE RECIPIENT ONLY AS EXPRESSLY APPROVED BY SIMPSON TECHNOLOGIES.



GENERAL ARRANGEMENT & FOUNDATION
300 SIMPSON MULTI-COOLER

TRADE SECRET INFORMATION	SCALE: 3/8"=1'-0"	FIRST RELEASE: 2159	ORDER NO: SALES
MADE BY: EEA	DATE: 9-10-98	300-40240	
CHECKED BY: SJN	APPROVED BY:		